



Luminic-IPL

SIPL-10

User Manual



**For your safety and correct usage of our device
We strongly recommend reading through this user manual.**

TABLE OF CONTENTS

○ IMPORTANT SAFETY INFORMATION	----- 4
○ THE NAME OF EACH PART	-----10
○ HOW TO USE LUMINIC SIPL-10?	-----12
○ OPERATION FOR HAIR REMOVAL	-----13
○ OPERATING FOR SKIN CARE	-----23
○ USER TIPS	----- 27
○ TROUBLESHOOTING	-----28
○ REPLACING LAMP	-----29
○ FAQ	----- 30
○ PRODUCT SPECIFICATION	----- 31
○ WARRANTY	----- 32
○ TREATMENT RECORD SHEET	----- 33



We appreciate for the purchasing Luminic SIPL-10. For the safe treatment and caring, you should be well-acquainted with this user manual. Particularly, please follow RESTRICTION before the treatment.



Danger

The following instructions contain important safety information, which may lead to death or critical injury if not followed.



Warning

Injury may occur when the following instructions are not followed.



Restriction

Refrain from administering if the person or the ara to be treated is affected by one of the following conditions.

IMPORTANT SAFETY INFORMATION

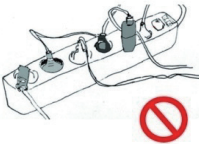


Danger

The following instructions contain important safety information, which may lead to death or critical injury if not followed.



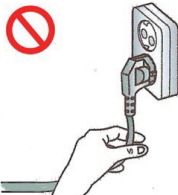
Be sure to keep the metal pins of the power plug free from dust or moisture. When cleaning, use a cloth-cleaner



Using multiple products on a single outlet is not recommended.



Keep the unit and the power plug away from heaters or stoves.



DO NOT pull the power plug by force or with wet hands.



Neither bending the power cord nor placing heavy objects on the power plug is recommended.



The unit is not designed for cleaning with water. Always clean with a dry cloth-cleaner before storing the unit.

- DO NOT operate the product in elevated or wet places.
- Ensure that the unit is turned off when connecting or disconnecting the power plug.
- DO NOT leave the unit connected to the power when not in use over a long period of time
- Disconnect from the power supply when cleaning the unit.

Major safety instructions

Please do not disassemble the product discretionally.

If customer dissemble product discretionally, free repair is not available.

Please do not fill up the air vent of fan during usage of main body or hand piece.

In case that ventilation does not work, it could cause the trouble on main body.

Please do use the provided cord only by our company in case that power plug and cord are broken.

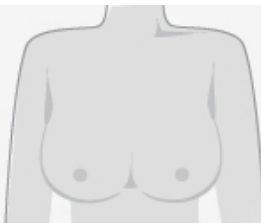


Warning

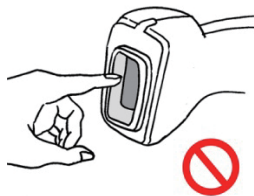
Injury may occur when the following instructions are not followed.



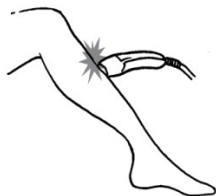
DO NOT use mucous membrane area such as lips, anus, or vagina, and this will cause a serious skin trouble.



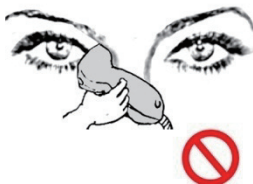
Product use should be limited on severe corium pigment, darkening, moles, age, spots, or birthmarks, which should be taped over before the treatment



DO NOT touch the lamp with bare hands. If there is any touch, you can get burned.



Always keep the hand piece in contact with the skin when the beam is on.



DO NOT beam direct on to unshielded eyes. DO NOT use the unit to eyes or eyelids



The unit is not to be used by children or persons with reduced physical, sensory or mental capabilities, or lack of experience and knowledge, unless they have been given instruction.



DO NOT use this unit for your face or neck for your safety



Restriction

Refrain from administering if the person or the area to be treated is affected by one of the following conditions.



A person whose activity was outdoors under strong sunlight, or who has received tanning treatment within the last 4 weeks.



A person whose skin color is black, or dark brown (page 18)



Pregnant women or the breast during the breast-feeding period.



Acne treatment medication (such as Accutane), whitening treatment, Retin A ointment, or cosmetics with retinol composition within the last 7 days.

DO NOT USE TO THIS AREA...

- ☐ Skin area with tatoos or permanent makeup.
- ☐ Skin area with severe pigment discoloring, or with thick or dense hair.
- ☐ Skin affected by diabetes or other skin diseases.

DO NOT USE TO THIS DEVICE IF YOU...

have used steroid products over an extended period of time, causing the skin to become thin.	Yes
are photosensitivity or sun allergy patients (porphyria, polymorphous light eruption, transient urticaria, erythematous).	Yes
are administered with a heart pacer, insulin pump, or any other medical device	Yes
have had radio-active treatment or chemical therapy within the last 3 months	Yes
have had skin cancer or has a higher chance of contracting skin cancer	Yes
have used medication or lotion with characteristics of higher photo-sensitive reactions within the last one month	Yes

THE NAME OF EACH PART



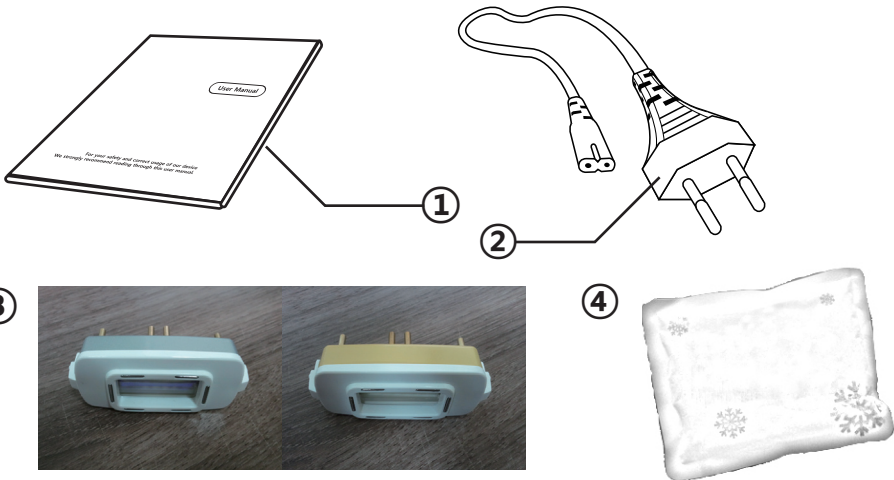
- ① Power SW : Power on/off
- ② Power Level : select the power level. (from level 1 to level 5)
- ③ Reset : this switch is located at the bottom
To activate reset function, press and hold more than 3 seconds
- ④ Power Level: 1(min), 2, 3, 4, 5(max)
- ⑤ Charge: When this is red, Charging: When green, ready to flash
- ⑥ Lamp: When this is green, lamp is OK, when this is red, the lamp should be replaced with new one. After replacement the reset should be done. Make sure to get after service in case green LED blinks indicating fan's stoppage. Be sure not to use SIP-10 in case red LED blinks indicating the inside temperature of main body raised up, then, stop using for the time being. If possible, it is not recommendable not to use SIP-10 for the long time.
- ⑦ Mode Switch : Hair Removal (downward), Skin Care (upward)

Hand piece



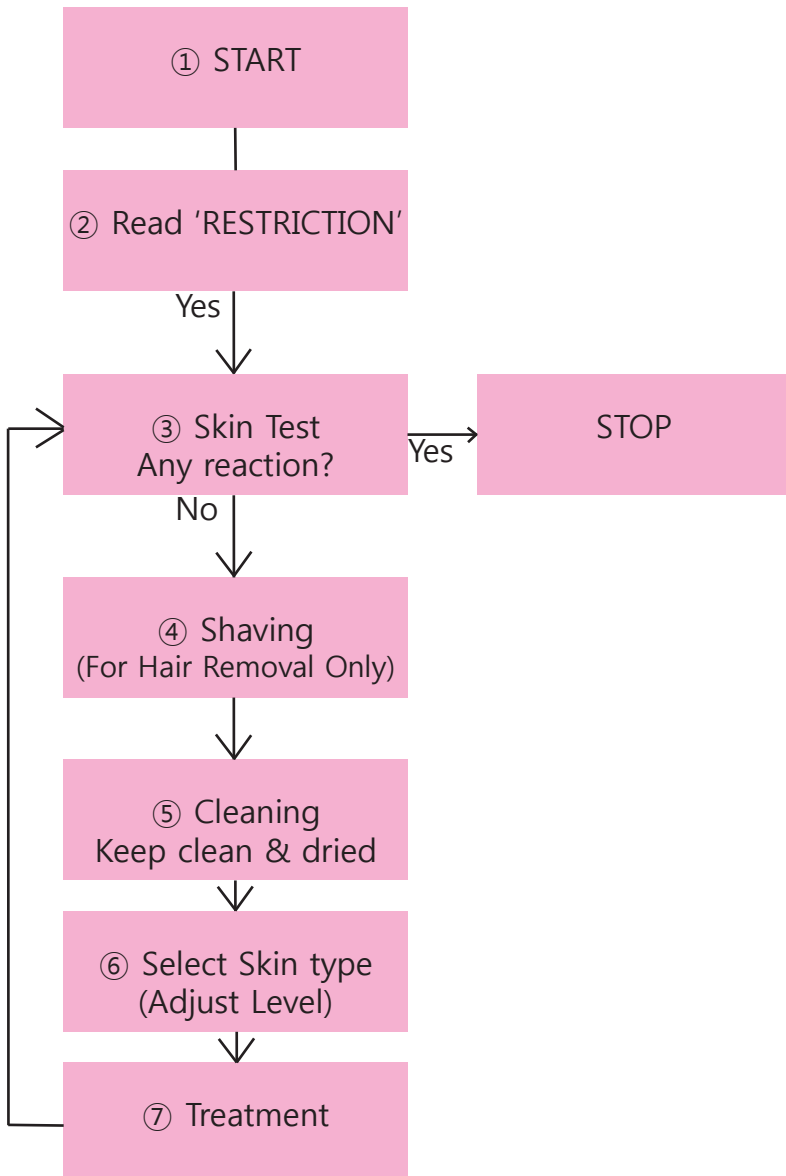
- ① Flash button
- ② Touch sensor : for safety, checking the touch state between the skin and the aperture of lamp module.

Accessory



- ① User Manual
- ② Power Cord
- ③ Lamp (Hair Removal , Skin Care)
- ④ Cooling Pack (Option)

HOW TO USE LUMINIC SIPL-10?



OPERATION FOR HAIR REMOVAL

HAIR GROWTH

Hair normally grows in three phases

Anagen phase (growing phase)

The concentration of melanin is highest when the hair grows most actively from the root. Melanin is the key factor to make the pigmentation of the hair, such that the darker the hair is, the more melanin there is in its root. Hence, controlling the melanin level is the key to this method of improving hair-growth efficacy. The most effective time for the IPL treatment is in the anagen phase of hair growth.

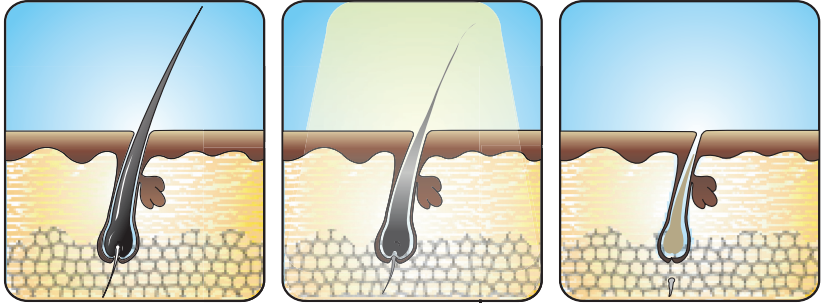
Catagen phase (degradation phase)

In decline period, hair growth stops, the pore and root shrink, and the old hair is then fallen out.

Telogen phase (resting phase)

Once the old hair is fallen out, a new hair will be slowly grown in the same root. The old root remains empty until the biological cycle restarts and a new hair grows in the place of the old one.

OPERATION PRINCIPLE



- Luminic SIPL-10 removes hair by intense pulsed light which heats up the hair shaft and its root.
- Through light transformation, the darker hair receives more heat.
- This process stops the hair growth early, in the anagen phase.
- Hairs are usually in different states of the hair growth's cycles.
- Hence, more than 4 treatments are required to give you long-lasting hair-removal successfully.

1. PRE-OPERATION

※ Before the treatment, read 'RESTRICTIONS' cautiously for your safety.

1) Skin Test

► Be sure that your skin is in a normal before starting the treatment.

► For the first-time use (or after increasing levels), test the skin reaction by emitting on the arms or back of the hands if there is any trace of vesicles, blisters, burns, or any other reactive symptoms on any other area not exposed to the beam.



► If you see any of the listed symptoms in 30 minutes, DO NOT start the treatment.



► If serious stinging occurs in the exposed area, STOP the treatment immediately.

► Your skin shows slight redness, prickles, tingles, or feels warm. This reaction is harmless and you can start the treatment if this disappears quickly.

2) Scheduling

► A typical full hair growth cycle may take 18~24 months. During this time multiple Luminic SIPL-10 treatment may be required in order to achieve long term hair removal

- Treat the entire place where you want to remove the hair in one time.
- Apply an ice pack every time in the place where you want to repeat the treatment. It is highly recommended to apply an ice pack in the place where the skin is sensitive and hair is strong such as under the arms part especially.
- Apply an ice pack on the place where you treated as long as hot temperature is just cool down, approximately 3 to 8 seconds.
- Try 2nd treatment as partial in the place where the hair is remained only after 3days from the 1st entire treatment.
- Perform the entire treatment and partial treatment as a couple and repeat the couple treatment in every two weeks.

1st Treatment	D-day	Entire treatment
2nd Treatment	D + 3day	Partial treatment
3rd Treatment	D + 14day	Entire treatment
4th Treatment	D + 17day	Partial treatment
5th Treatment	D + 28day	Entire treatment
6th Treatment	D + 31day	Partial treatment
7th Treatment	D + 42day	Entire treatment
8th Treatment	D + 45day	Partial treatment

- Repeat the entire treatment and partial treatment as long as all the hairs are removed in every 2 weeks. It will take approximately 7 to 8 weeks in total.

3) Shaving

► Shave with razors to ensure the light energy is channeled to the hair root.



► DO NOT remove the hairs by means of wax, epilator, tweezers, or depilation cream. Have your hairs cut by 1mm or so. This helps you check the treatment effect easily. After flashing, you can see if the hair is burned out or not.

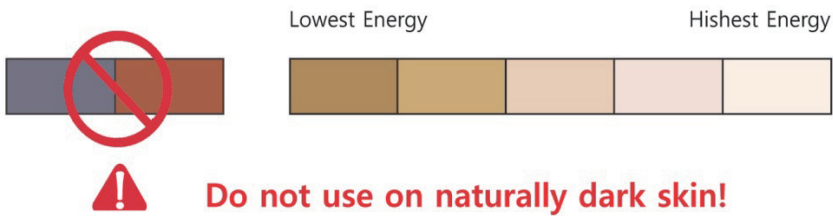


4) Cleaning

► Clean the treatment skin area and make sure it is dried and free from grease or oil.

5) Checking if the MODE is positioned to 'HR' mode.

- ▶ Insert HR lamp module into the Hand Piece.
- ▶ Set the bottom switch to the 'HR' mode.
- ▶ Check if the LED lamp on the level is 'RED' color.



- ▶ Proceeding the treatments on dark brown, black skin, or on the tanned skin may result in adverse effects like burns blisters, coloring/discoloring on the skin, the inflation of follicles, etc., and not recommended to be treated.

6) Setting the Energy Level

※ In case of initial usage of SIPL-10, please start with STEP 1 for safer treatment

- ▶ You can get more comfort and effective treatment from proper energy level.
- ▶ By pressing STEP button, increase or decrease the energy level.
- ▶ For the users' safety, the energy level is back to 'Level 1' automatically when it is OFF and ON again.
- ▶ Higher step delivers you high efficiency, but may bring you more risk simultaneously. So, setting the right STEP is very important before the treatment.

2. Operation



CHECKING THE LAMP

- ▶ Before connecting the power to the unit, check the lamp position of the hand piece.
- ▶ Check if the lamp module color is 'SILVER'.



TURNING ON THE POWER

- ▶ Plug in the power and turn on the unit.



CHECK THE LED COLOR AND SETTING THE LEVEL

- ▶ Check if the LED color is RED. If it is GREEN, then adjust the bottom switch to opposite side.



COOLING

- ▶ Cool down the skin site with cooling pack before the treatment. Cooling eases your pain. (Option)



FIRST PROCEDURE

▶ When the READY LED becomes green, indicating that the unit is ready, place the hand piece to the skin site to treat.

▶ Press the START button. Keep pressing until you see two flashes, which is called 'double-shot' and has normally 0.5~1.2sec of interval.

※ Double-shot comes from level 2.

※ The buzzer will not sound if the contact is not accurately made or the unit is muted.

3. POST OPERATION

SUN BLOCKING

- ▶ Do not take an intensive sunbath or suntan.
- ▶ Apply a sun blocker to the treated areas.
- ▶ Avoid swimming in chlorinated water for 48 hours.
- ▶ Avoid applying cosmetic substances immediately after treatment

USING HAND PIECE

- ▶ Wait during charging time (Ready LED indicates red)
Keeping the hand piece far away from the skin for cooling lamp module down.

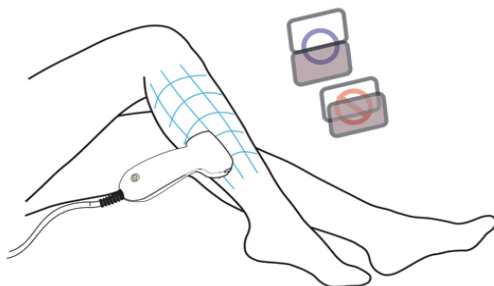


< Charging >



< Emitting >

- ※ DO NOT treat consecutively on to the same site more than twice or do not overlap.



FILTER CLEANING

- ▶ Please clean the lamp filter softly using cotton bud with dip in alcohol, in case the lamp filter is contaminated by dust or ashes.

OPERATING FOR SKIN CARE

1. Pre-operation

※ Before the treatment, read 'RESTRICTIONS' cautiously for your safety.

1) Skin Test : Please follow the Hair Removal Skin Test Method. (page 15)

2) Scheduling

▶ The total of 10 times treatments is one session. The recommended schedule is of twice or three times treatments per week and it takes 4 to 5 weeks for one session.

▶ When the beginning treatment of session, start with level 1, and increase the level from next treatment.

▶ The Power level lamp indicate the energy level while the procedure should start over from Level 1 when the treatment has been paused for over two weeks.

3) Face Cleaning



▶ DO NOT use alcohol or acetone with and inflammable composition.

▶ Use a peeling solution suitable for your skin type such as glycolic acid peeling 10% to remove any keratin or dead skin cells.

▶ Use non-alcohol toner when the face is dried after cleansing.

2. Operation



CHECKING THE LAMP

- ▶ Before connecting the power to the unit, check the lamp position of the hand piece.
- ▶ Check if the lamp module color is 'YELLOW'.



TURNING ON THE POWER

- ▶ Plug in the power and turn on the unit.



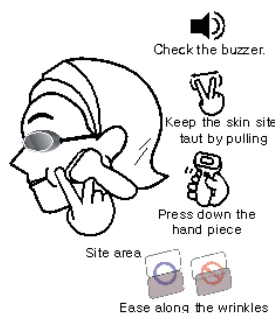
CHECK THE LED COLOR AND SETTING THE LEVEL

- ▶ Check if the LED color is GREEN. If it is RED, then adjust the bottom switch to opposite side.



FIRST PROCEDURE

- ▶ When the READY LED is green, indicating the unit is ready. Place the hand piece to the skin site while keeping the skin site taut by gently pulling the skin in the opposite direction.
- ▶ Press the START button. The buzzer will not sound if the contact is not accurately made or the unit is muted.



CHARGING AND EMITTING

► After emitting a sequence of pulse, the READY LED will become red and start blinking. Wait until the LED becomes green before moving on to another site. (Tip: during recharging, keep the hand piece away from the skin site to cool down, and do not block the vent located in the hand grip.)



SECOND PROCEDURE

► When the 1st procedure has covered the entire facial area, start the 2nd procedure.

► Move along the site area for full coverage rather than focusing on a specific area repeatedly.



CHECKING THE REACTION

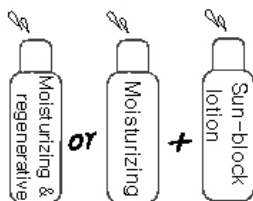
► After the 2nd procedure, the face should assume a slight reddish tint from the heat. However, terminate the procedure if blisters or vesicles appear on the site area.

3. Post Operation



Moisturized mask pack

► Apply a moisturizing mask or modeling pack as described in the process of treatment, and complete the treatment by applying moisturizer or regeneration cream and sun block lotion.



► From the start of the treatment and one month after the completion of 1 session, avoid direct sun exposure or apply sun block cream to protect the skin from damaging UV rays.

Filling
Massage
Meridian
massage

► Keep you skin moisturized to prevent it from becoming dry.

USER TIPS



Check the buzzer.



Press down the hand piece



Ease along the wrinkles

- The buzzer sound indicates that contact with the skin site has been made and the unit is ready for operation. Always check the buzzer sound before emitting a sequence.
- Move the hand piece far away from the skin site so that the skin and the hand piece can cool down thoroughly.
- Do not overlap.
Try to cover every area of the skin site.
- When the skin becomes excessively hot, abort the operation even during the treatment, and wait until recharging is complete before moving to another designated skin site.
- Do not use hair removing on the face or neck
- Adjust the hand piece so that the touch switch remains in contact and ease along curved contours.

TROUBLESHOOTING

Please refer to the following table for troubleshooting before requesting service.

Symptom	Checkpoint	Troubleshooting
When the unit is not operating	Check the power connection. Ensure the unit is connected to AC Power. Check if the lamp unit is overheated.	Make sure that the power connection is securely in place. Turn off the unit for 30 minutes to relieve overheating.
	Check if the power cord is damaged or exposed to water.	Call service for evaluation or repair. DO NOT disassemble or modify for yourself.
When the beam becomes weak during the procedure	Check the lamp life indicator located on the right side of the unit.	Replace the lamp unit. Purchase the optional lamp unit.
When the illumination button does not work	Check to see if the buzzer sounds. Check to see if the unit is set to mute.	Contact the hand piece to the skin site again and see if the buzzer sounds.

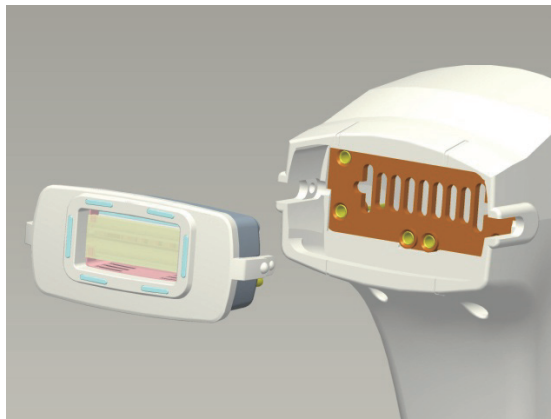
Please note that service may not be free if the request is made and the unit is found to be in perfect working condition.

If the problem continues, please contact your local distributor office for further information and instructions.

REPLACING THE LAMPS

When to replace the lamp

- If the lamp is used in excess of its lifetime, it will cause deteriorated treatment. Then, replace the lamp which blink continuously
- Turn the device off and unplug the cord from the electrical outlet
- Grip the unit with both hands and pull out the lamp.
- Don't touch any metallic materials.
- Insert a new lamp unit, Turn the device on, and use a sharp-edged tool to press the initiation button (RESET) for 3 seconds to reset the lamp life indicator.



Lamp Cleaning

Clean the lamp filter softly using cotton bud with dip in alcohol in case the lamp filter is contaminated by dust or ashes.

FAQ

Q. Is the IPL harmless if I see it direct?

A. Luminic SIPL-10 is designed for safe treatment. It has the touch sensor at the head of hand piece, and without touching this sensors to your skin, the light is not emitted.

Q. What is the lamp life?

A. Luminic SIPL-10 indicator shows you when you have to change the lamp module. Averagely, lamp life is 6,000 shots in HR mode, and 20,000 shots in SC mode. if the light intensity falls below acceptable level, it stops emitting light automatically, then you have to change to new lamp module.

Q. When uses Hair Removal, do I have to remove hairs completely before the treatment?

A. Just shave by 1mm of height. If you remove your hairs by waxing, epilator, tweezers, your hair follicle absorb less heat, and this will lessen the effect.

Q. Can I see the hair remained after the HR treatment?

A. Several hairs can be remained after the normal treatment. This will be removed automatically within two weeks because the hair follicle was affected/harmed by IPL.
Do not remove the remained hairs by wax, epilator, tweezers.

PRODUCT SPECIFICATIONS

Lamp	Xenon Lamp
Light Source	Pulsed light
Energy Fluency	Hair removal : $3.0\text{J}/\text{cm}^2 \sim 10.4\text{J}/\text{cm}^2$
	Skin care : $1.8\text{J}/\text{cm}^2 \sim 5.5\text{J}/\text{cm}^2$
Spot Size	30 mm x 15 mm
Wavelength	Hair removal : 470 - 1100 nm
	Skin care : 420 ~ 1100 nm
Lamp Life	HR : 6000 flash , SC : 20000 flash
Weight	1.7Kg
Dimension	245mm (L) X 135mm (W) X 125mm (H)
Operation Conditions	
Temperature	5°C - 30°C
Humidity	30% - 80% RH
Rated Power	230VAC , 50 or 60 Hz, 200W
Storage Conditions	
Temperature	-20°C to 80°C
Humidity	0%-95% RH

The design and specifications may be subject to change without prior notice in order to improve the product performance.

WARRANTY

Product Name		Model Name	
Purchased on	MM DD YY	Serial No.	
Seller		Price	

Warranty Service

Consumer Service Information		Within the warranty period	After the warranty period
	Service requested within a month from the date of purchase under normal use or operation.	Replace the product or refund	Not applicable
Defects in workmanship or performance during the warranty period, under the normal use or operation	For defects	Free-of-charge service provided	At minimum service charge
	For the 2nd defect after the first repair service	Replace the product or full refund	At minimum service charge
	For defects unable to fix	Replace the product	Replace the product after charging the service cost according to reflecting the depreciation
	The replaced product is major defect again within a month	Full refund	Not applicable
For damages due to serviceable parts not on stock during the mandatory period	For the defects contributable to normal use and deteriorated performance .	Replace the product	At minimum charge of service
	For defects due to misuse or accident.	Replace the product after charging the cost.	
	Injuries caused by product replacement	Medical bills other normal expenses and compensation for damage	

Service cost charging *Please be sure that you read the warranty and troubleshooting information before sending the unit to service. In case you send the unit to service is not out of order, just caused by misconceived defects as one of following reasons, you will be charged the cost of expenses

1. If the defects are caused by any other means than clearing, adjusting instruction or installation.
2. If the defects are caused by consumer misuse.
3. If the defects are caused by sort of disaster or over end life of consuming components.

TREATMENT RECORD SHEET

<Record # _____>

No.	Date	Treatment Area	Step
1			
2			
3			
4			
5			
6			
7			
8			
9			
10			
11			
12			

<Record # _____>

No.	Date	Treatment Area	Step
1			
2			
3			
4			
5			
6			
7			
8			
9			
10			
11			
12			

<Record # _____>

No.	Date	Treatment Area	Step
1			
2			
3			
4			
5			
6			
7			
8			
9			
10			
11			
12			

<Record # _____>

No.	Date	Treatment Area	Step
1			
2			
3			
4			
5			
6			
7			
8			
9			
10			
11			
12			

<Record # _____>

No.	Date	Treatment Area	Step
1			
2			
3			
4			
5			
6			
7			
8			
9			
10			
11			
12			

<Record # _____>

No.	Date	Treatment Area	Step
1			
2			
3			
4			
5			
6			
7			
8			
9			
10			
11			
12			

<Record # _____>

No.	Date	Treatment Area	Step
1			
2			
3			
4			
5			
6			
7			
8			
9			
10			
11			
12			

<Record # _____>

No.	Date	Treatment Area	Step
1			
2			
3			
4			
5			
6			
7			
8			
9			
10			
11			
12			

<Record # _____>

No.	Date	Treatment Area	Step
1			
2			
3			
4			
5			
6			
7			
8			
9			
10			
11			
12			

<Record # _____>

No.	Date	Treatment Area	Step
1			
2			
3			
4			
5			
6			
7			
8			
9			
10			
11			
12			

<Record # _____>

No.	Date	Treatment Area	Step
1			
2			
3			
4			
5			
6			
7			
8			
9			
10			
11			
12			

<Record # _____>

No.	Date	Treatment Area	Step
1			
2			
3			
4			
5			
6			
7			
8			
9			
10			
11			
12			

Luminic



 SKIN SCIENCE