

LS650

User manual



Warning

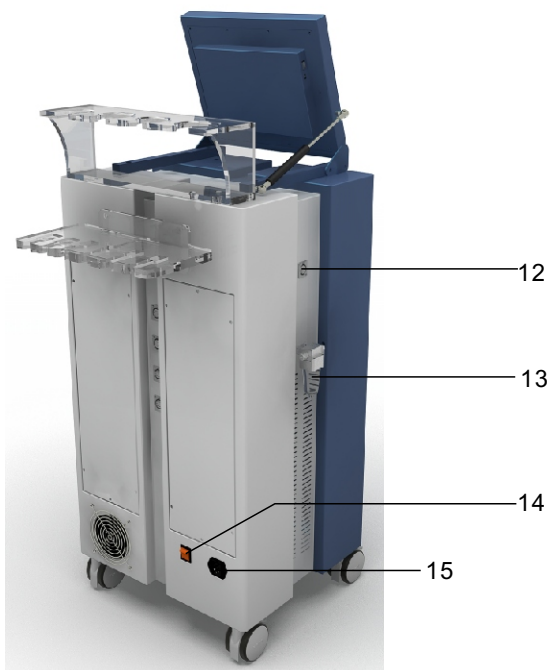
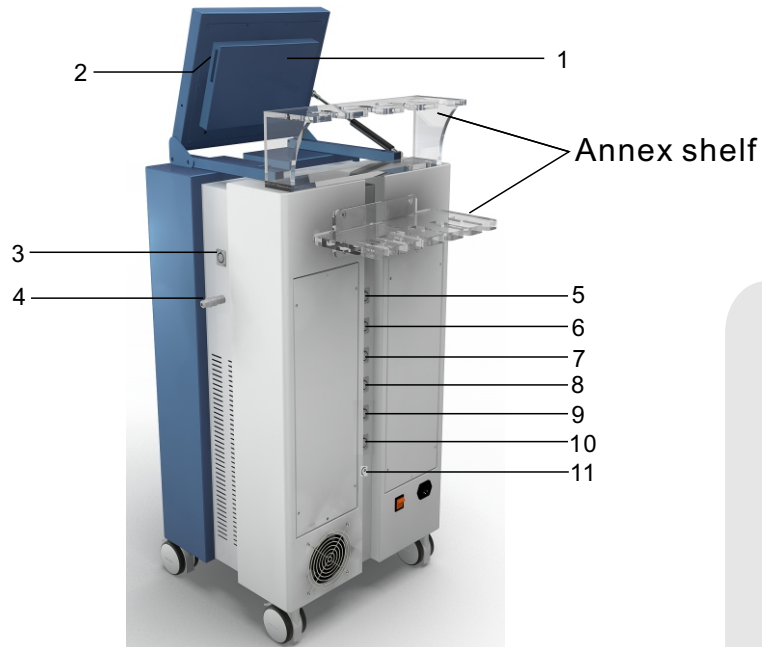
Dear user:

Thanks for using our company's products, in order to fully make use of the products, we sincerely suggests follow:

- ◆◆Please read the instruction in detail and keep it well for further reading and consulting.
- ◆◆Please follow the instruction to fit and operate the machine correctly.
- ◆◆Please do not remove and change any accessories of the machine.
- ◆◆It forbids others to open and remove the mainframe except the authorized people in the company.
- ◆◆It forbids others to change and maintain the machine except the professional people.
- ◆◆Please contact us if there is any trouble during operation.

This product does not belong to medical, please don't use for disease treatment!

Parts Introduction



Accessories



Laser X2



Laser X4



40K cavitation explode work head



Hexapolar RF laser work head



Small fat remove work head



Big fat remove work head



Service brake jack



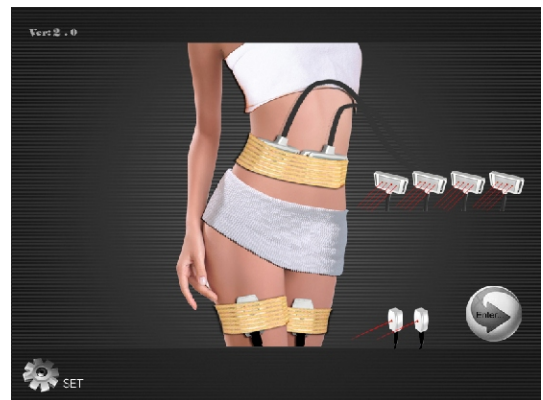
Bind ties

Basal Operation

- Put the accessories well and connect them to the host.
 - (1)Insert 40K cavitation explode work head to [3];
 - (2)Insert Big or small fat remove work head to [4];
 - (3)Insert Laser X2-1 work head to [5];
 - (4)Insert Laser X2-2 work head to [6];
 - (5)Insert Laser X4-1 work head to [7];
 - (6)Insert Laser X4-2 work head to [8];
 - (7)Insert Laser X4-3 work head to [9];
 - (8)Insert Laser X4-4 work head to [10];
 - (9)Insert Service brake to [11];
 - (10)Insert Hexpolar RF laser work head to [12];
- Insert power supply line to [15], turn on the General power switch [14].
- As (Fig 1) shows, input default Password "000000" to enter interface as (Fig 2).
- Click "ENTER..." to enter function interface as (Fig 3).



(Fig 1)



(Fig 2)

Laser Function

1.Operation step of Laser X4

- Clean the skin, and according the treatment part to choose the suit band ties and tied them up.
- Put the Laser X4 work heads into the band ties, the side with Led contact to skin directly.
- Set intensity of every Laser X4 in interface (Fig 3).

Operation steps:

When the cursor "V" on the location "channel 1 OFF", click "←" and "→" to set the intensity of laser, the range is :1HZ~1000HZ. Then move the cursor "V" to the "channel 2 OFF", click "←" and "→" to set the intensity of laser
- Setting work time

30 minutes of every treatment part, and click "Time" enter interface (Fig 4). Click "←" and "→" one time to change one minute, click the number of time directly to change ten minutes every time.then click "X4" return function interface.
- click "⏸" to start work.



(Fig 3)



(Fig 4)

(6) The machine will pause automatically if the setting time is over. Beautician take the Laser X4 work head out and put them well, then loosen the band ties.

2.Operation step of Laser X2

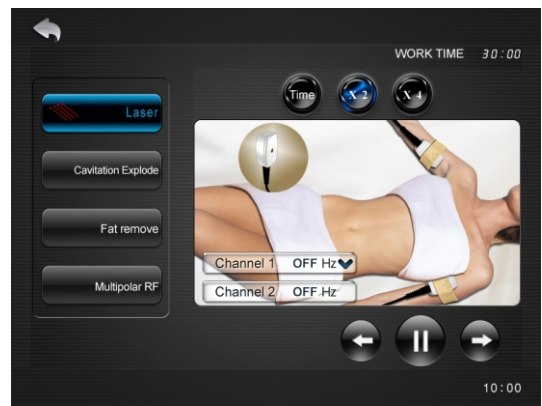
(1) Click the “X2” in interface (Fig 3) shows to enter interface (Fig 5).

(2) The other steps please refer to “Laser X4 Function”.

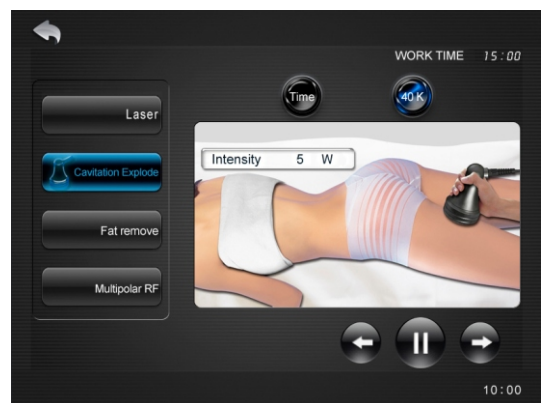


CAUTION LASER: Do not let the laser light straightly shine upon the eyes in Case of eyes hurt.

Cavitation explode Function



(Fig 5)



(Fig 6)

1. As the screen shows (fig 3), click the “Cavitation explode” key to enter interface as (Fig 6) shows.
2. Click “←” and “→” to adjust the output intensity: 5W(weak)~50W(strength).
3. Click “Time” on the screen and set the working time (10~15 min every part).
4. Applied gel on fleshy parts (Eg. Abdomen, hip, thigh) The amount depends on moving flexibility of the cavitation explode work head.
5. Click “⏸”, put the service brake under your feet, step on to start working, move away for pause.
6. Beautician hold the ultrasound head to move slowly on skin, in circle or beeline repeatedly, the other hand push the fat towards the cavitation explode work head.
7. Do not use on back, avoid using on bones.
8. Do not use on uterus part when women do abdomen care. Abdomen treatment during menstruate should be Avoided.
9. The machine will pause automatically if the setting time is over.
10. Clean the leftovers with hot towel, use warm towel to clean the ultrasonic cavitation slimming head.

Cautions:

1. Applied enough gel on skin need treated.
2. Do not stay unmoved on any part of your body and do not stay on bones.
3. The daily treatment should be within 30 minutes.
4. There will be ultrasonic only when you step on the service brake.
6. Do not used in the human body heart, throat and eyelids. If the skin is sensitive or becomes unhealthy, the strength of the power should be adjusted down.

Fat Remove Operation

1. Click to "Fat remove" in interface (Fig 3) shows, and enter interface (Fig 7) .
2. Click "←" and "→" to adjust vacuum intensity, the setting intensity range is: 10KPa(weak)~100KPa(strong).
3. Click "Mode" to choose vacuum mode as follows shows:

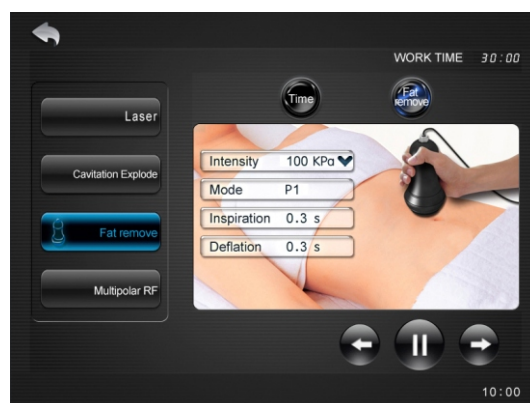
Mode	P1	P2	P3	P4	PE	P6
Inspiration	0.3S	0.5S	0.8S	6.0S	10S	--
Deflation	0.3S	0.5S	0.4S	2.0S	2.0S	--

Notes:

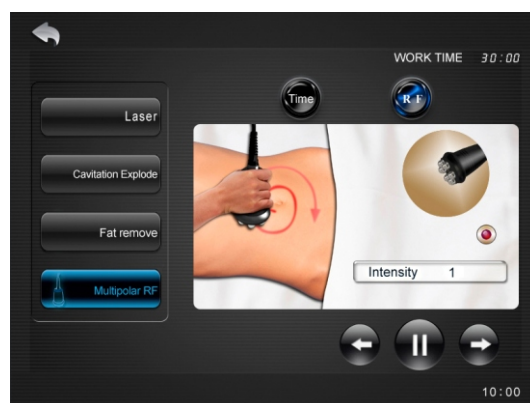
P1~P3 mode are default mode. If not fit for you, you can click "←" and "→" to adjust. the setting inspiration/deflation time is 0.1S~3.0S.

P4~P6 mode can't adjust inspiration/deflation time.

4. Click "Time" set treatment time (about 20 minutes).
5. Applied aroma oil and massage oil on treatment part.
6. Click "⏏" to start the function. Click "⏸" to stop.
7. The machine will stop automatically if the setting time is over.



(Fig 7)



(Fig 8)



CAUTION LASER: Do not let the laser light straightly shine upon the eyes in Case of eyes hurt.

Multipolar RF Operation

1. Click " Multipolar RF " as (Fig 3) shows, enter interface as (Fig 8).
2. Set work time, 20 minutes for each part.
3. Click "←" and "→" to adjust output intensity: 1(weak)~10(strength).
4. Click "⏏", the machine is in standby state. Beautician put the service brake under your feet, step on to start working, move away for pause. Press "⏸" to stop working.
5. The system default laser is start state, click "🔴", the laser function is closed.
6. Applied gel on skin needed nursing, the electrode probe move slowly on skin, If there is too much fat, you can increase the output intensity.
7. The machine will pause automatically if the setting time is over.
8. Clean the leftovers with hot towel, use warm towel to Clean the work head.


Cautions:

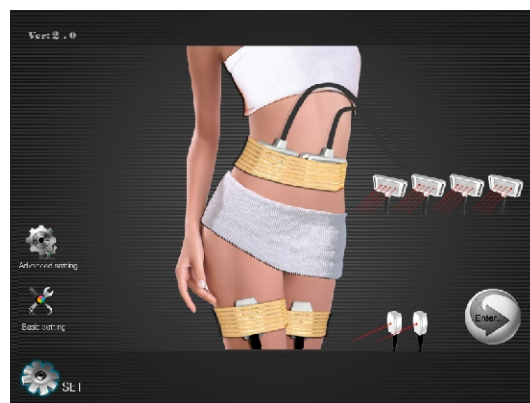
1. Beautician should wear insulated gloves during operation.
2. Do not wear any aglet, both for the beautician and the users.
3. The electrode probe must be fully in contact with skin. Do not contact skin with unipolar when using of hexpolar RF work head otherwise it will produce pulse discharge, gel paste etc. Products like gel maybe evaporated into a mist.
4. Do not make the RF electrode stay on any part without moving. Keep it moving on skin slowly.
5. Hexpolar RF work head do not use on eyes and facial.
6. Do not let the laser light straightly shine upon the eyes in case of eyes hurt.

Others

Click “set” as the(Fig 2) shows. Enter interface as (Fig 9):

①Click“ basic setting ”, enter interface as (Fig 10).

- 1---Select language
- 2---Regulate date and time
- 3---Regulate brightness of the screen
- 4---Click"calibration" enter interface as(Fig 11) for
Calibrating the screen. Click “” on the center of
The cross. otherwise it will be repeated calibration.
- 5---Keys recovery back

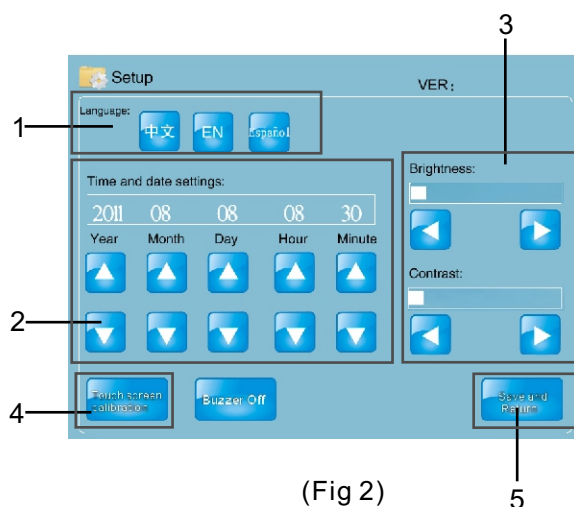


(Fig 9)

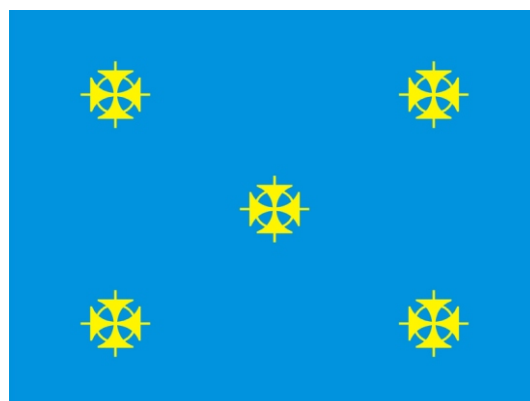
Notes “advanced setting” is for manufacturer only.

Forbidden group

1. People with heart disease or high blood pressure, or configured cardiac pacemaker.
2. Patients with acute inflammation, asthma, deep vein thrombosis, thyroncus, cancer.
3. People with hemorrhagic disease, trauma or who is bleeding.
4. Pregnant women
5. Medical Plastic parts, or parts with artificial in filling inside.
6. People with metal inside the body(include metallic tooth)
7. Patient with skin inflammation or with edema.
8. People with an abnormal immune system.
9. Numb or insensitive to heat.



(Fig 2)



(Fig 11)

Technical parameters

Input: AC110V/60Hz ☐ AC220V/50Hz☐

Power: $\leq 200\text{VA}$

Vacuum: 100KPa

Annex list

1.Host	1set
2.Power supply line	1pc
3.User manual	1copy
4.40K cavitation explode work head	1pc
5.Big fat remove work head	1pc
6.Small fat remove work head	1pc
7.Laser X4	4pc
8.Laser X2	2pc
9.Hexpolar RF laser work head	1pcs
10.Accessory frame	2pc
11.Service brake	1pc
12.Hexagonal screws	10pcs
13.Hexagon wrench	1pc
14.Black tube (with white fast connection)	1pc
15.Sealing ring	10pcs
16.Bind ties	5pc